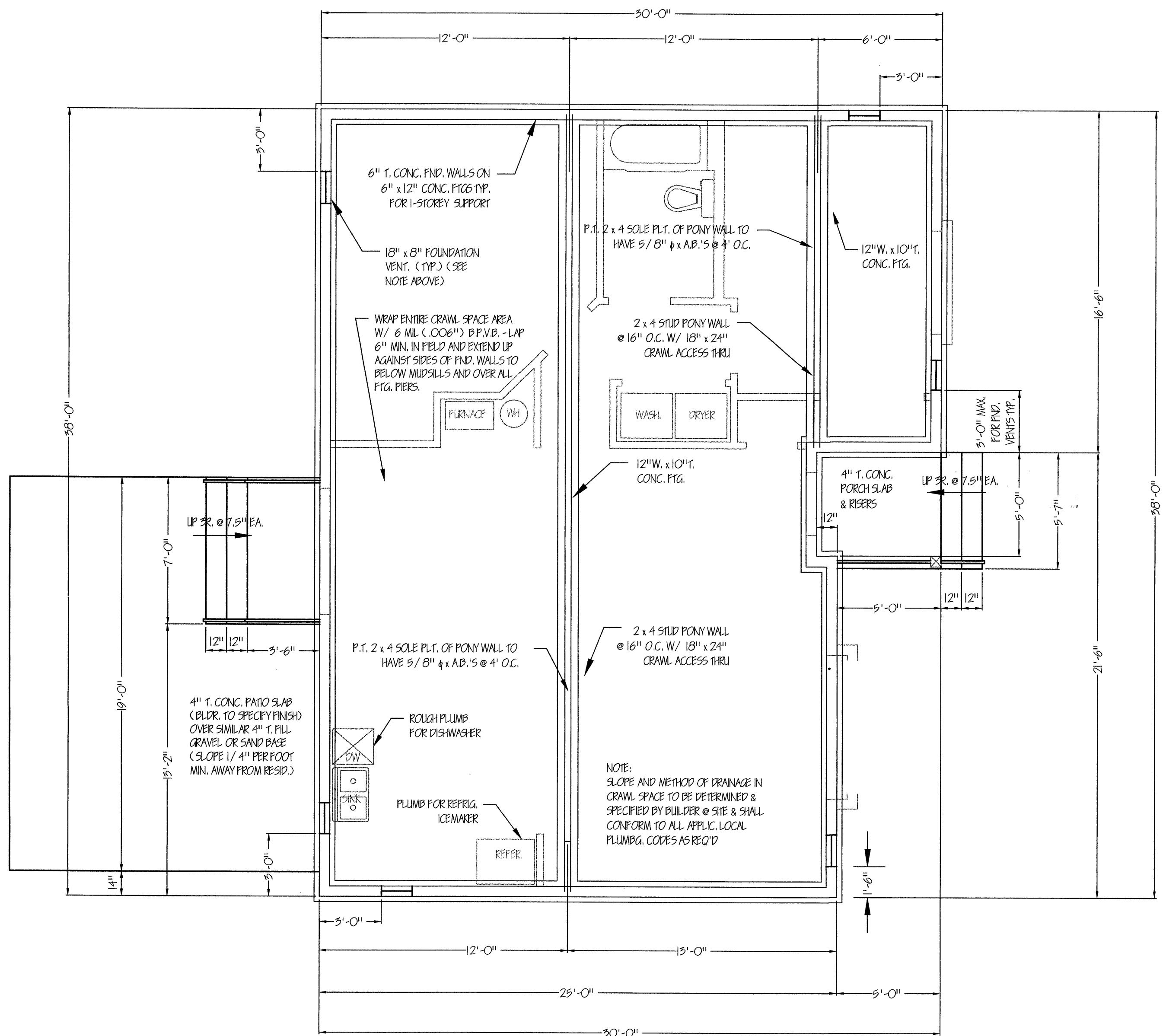


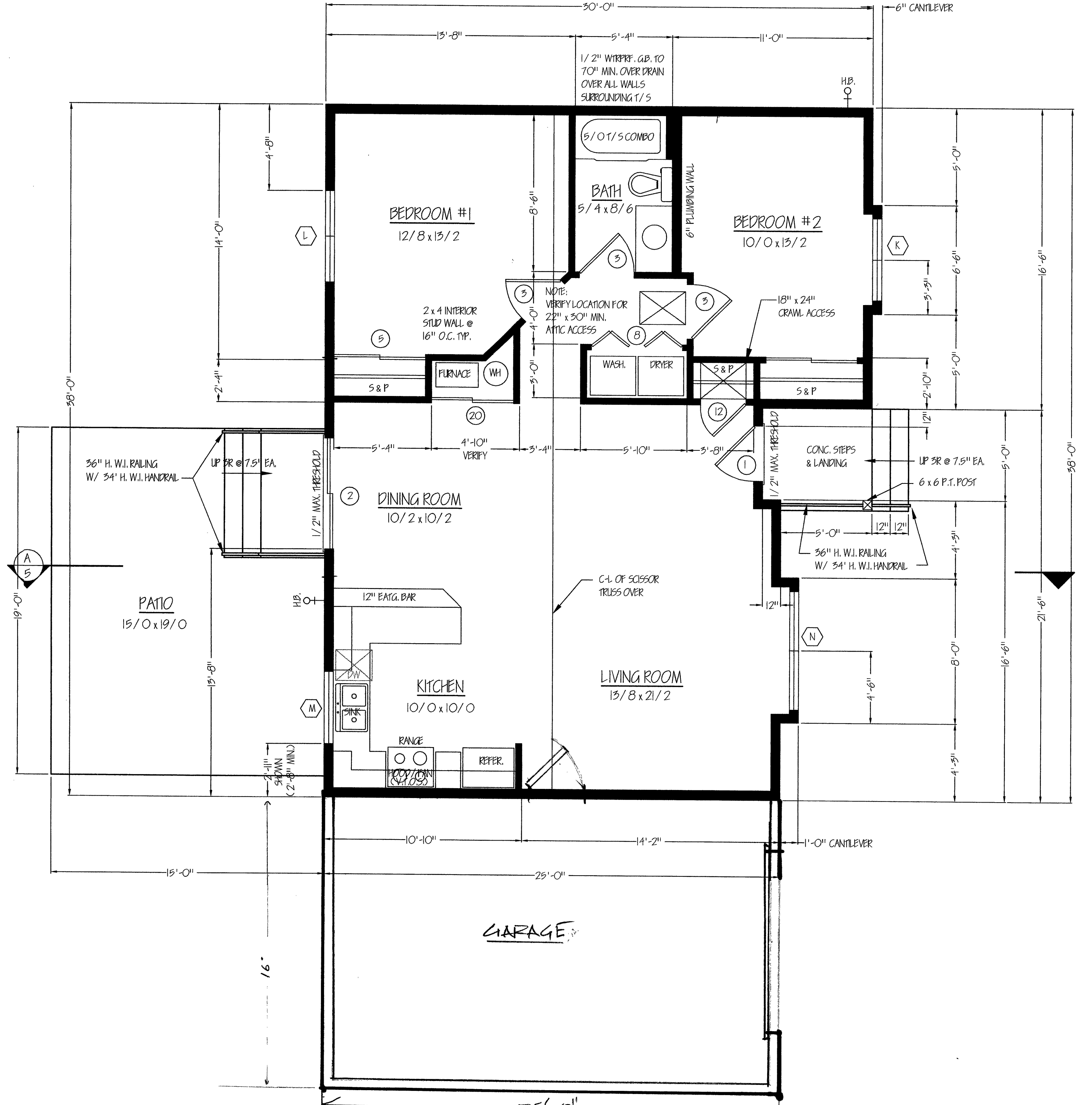
SEE SHEET N-1 AND N-2  
FOR ADDITIONAL INFORMATION

REVISIONS	BY

NOTE:  
CRAWL SPACE VENTILATION TO BE AS PER  
IRC SECTION 2307.7 FULLY. TOTAL NET AREA  
OF VENTING REQ'D TO BE EQUAL TO 1 SQ. FT.  
OF VENT AREA FOR EVERY 150 SQ. FT. OF UNDER-  
FLOOR AREA. OPENINGS TO BE NOT MORE THAN  
5" FROM CORNERS NOR MORE THAN 25" APART  
AND ARE TO BE LOCATED EQUALLY DISTRIBUTED  
ALONG THE LENGTH OF AT LEAST TWO OPPOSITE  
SIDES. THEY SHALL BE COVERED WITH CORROSION  
RESISTANT WIRE MESH W/ MESH OPENINGS OF 1/4".



**FOUNDATION PLAN**  
1/4" = 1'



**FLOOR PLAN** 1038 S.F.  
1/4" = 1'

Spokane Indian Housing Authority  
Mutual Help Development Project 37-27 LIHTC

DRAWN: R.S.  
DATE: 06/13/03  
SCALE: NOTED  
PLAN NO. 1014B  
SHEET: 2  
OF 5 SHEETS