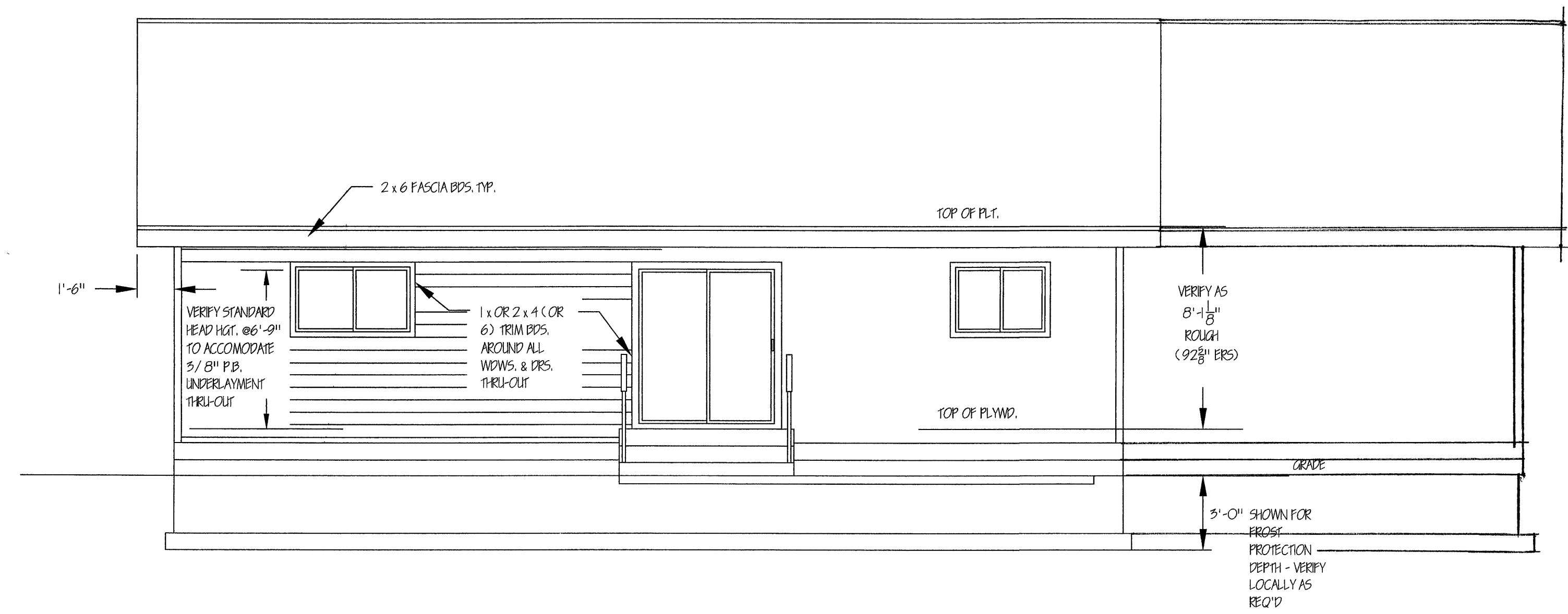


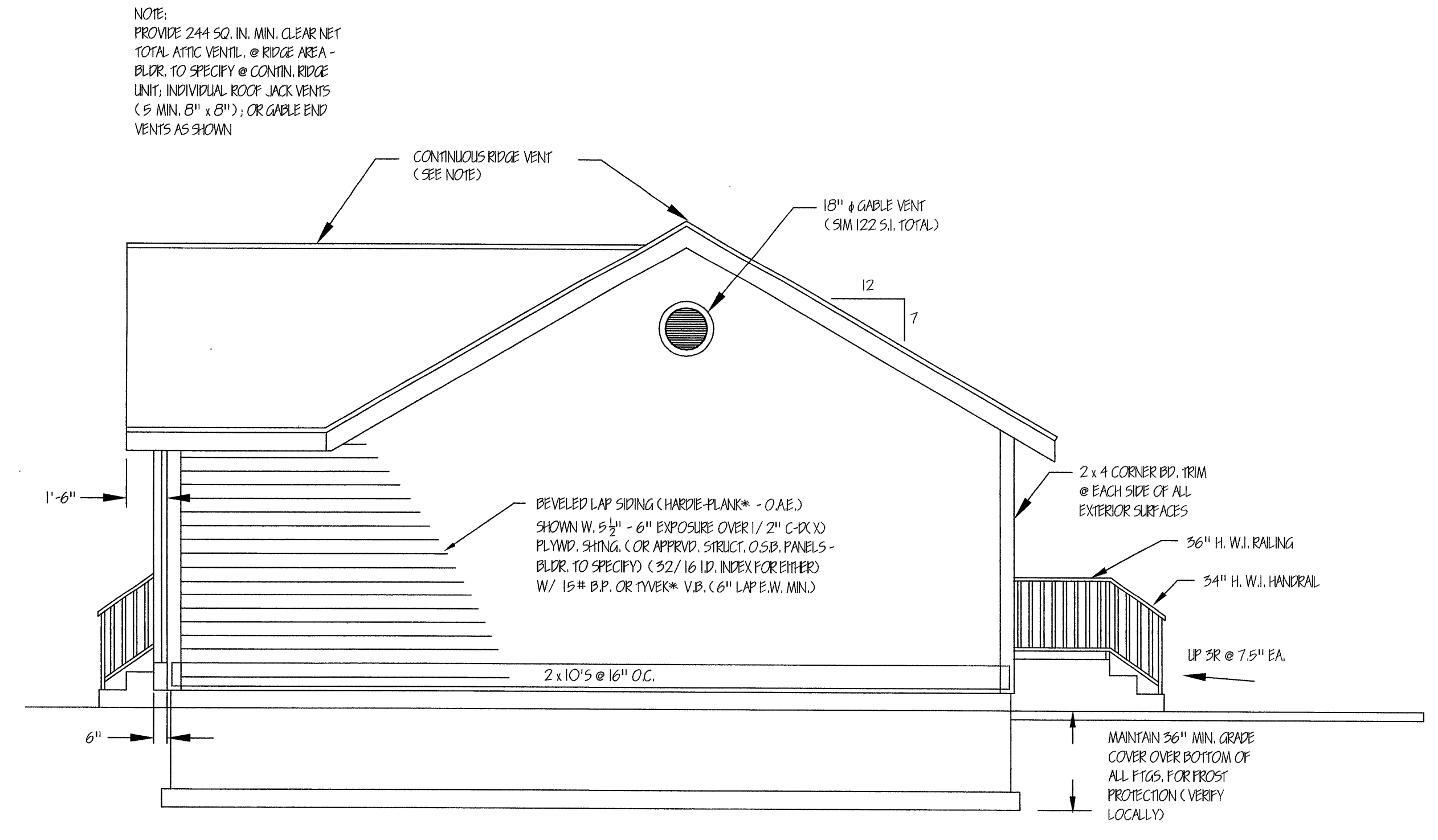
SEE SHEETS N-1 AND N-2 FOR ADDITIONAL INFORMATION

REVISIONS	BY



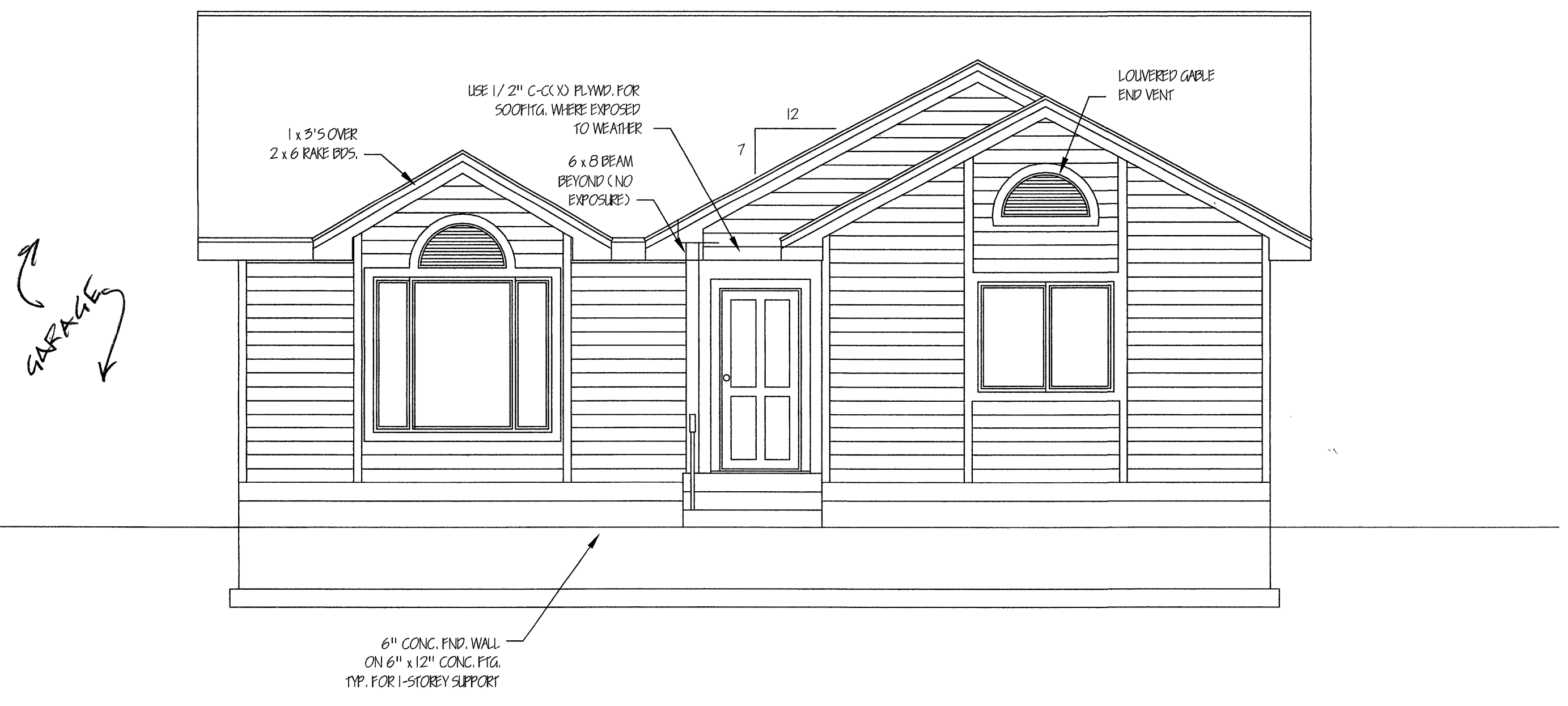
REAR ELEVATION

1/4" = 1'



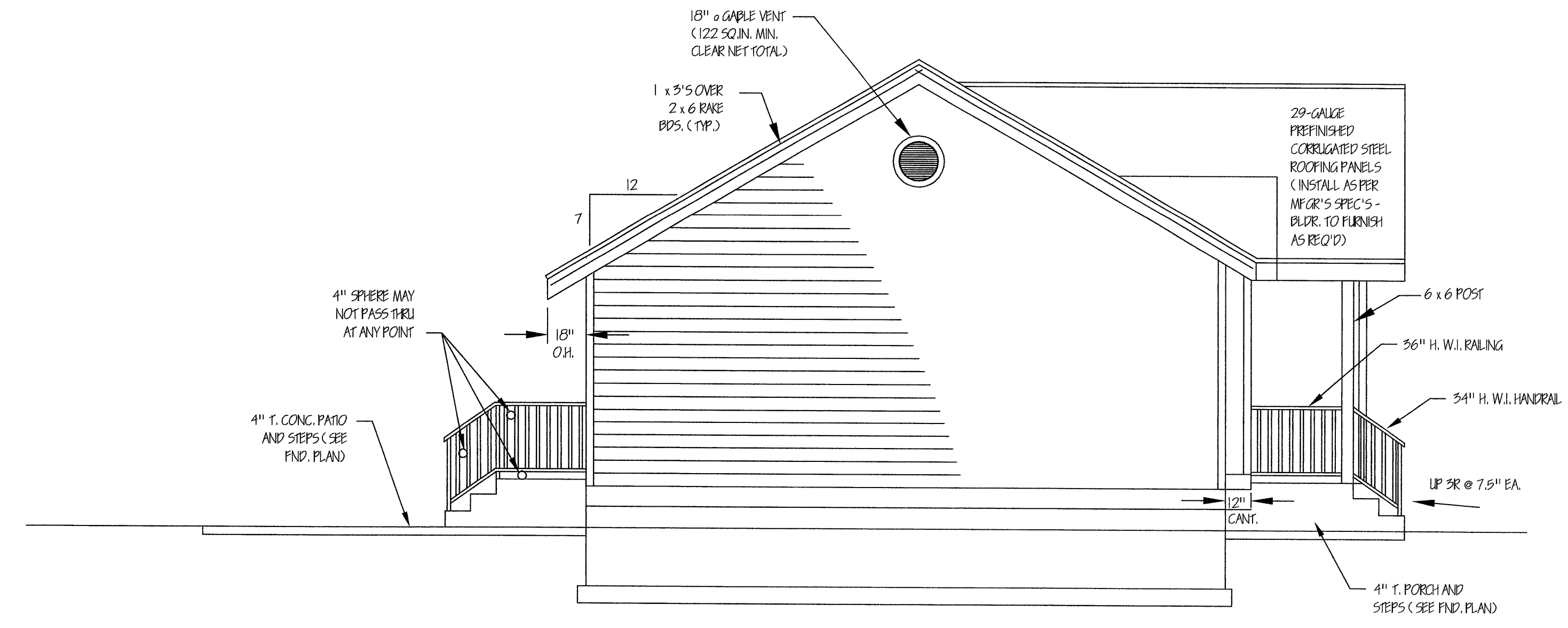
LEFT ELEVATION

1/4" = 1'



FRONT ELEVATION

1/4" = 1'



RIGHT ELEVATION

1/4" = 1'

Spokane Indian Housing Authority
Mutual Help Development Project 37-27 LIHTC

DRAWN: R.S.

DATE: 06/13/03

SCALE: NOTED

PLAN NO.

1014B

SHEET:

1
OF 5 SHEETS